

Tender
System repair

Ceramic
repair

without acid



- *Higher Biocompatibility*
- *No risks for tissue*
- *Higher adhesion*

estetica
M
GRUPPO
MICERIUM

MICERIUM S.p.A. Via Marconi, 83 - 16030 Avegno (GE) Italy
Tel. (+39) 0185 7887 870 Fax (+39) 0185 7887 970
www.micerium.it - micerium@micerium.it

FAST, SAFE & RELIABLE REPAIR



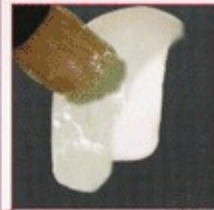
1 Sandblasting



2 Tender Bond
on metal and ceramic



3 a. Tender paste opaque
"O2" opaque
on metal



3 b. Tender paste opaque
"clear"
on ceramic



4 Dentine composite

Enamel plus HFO
with rubber brush
TPENS



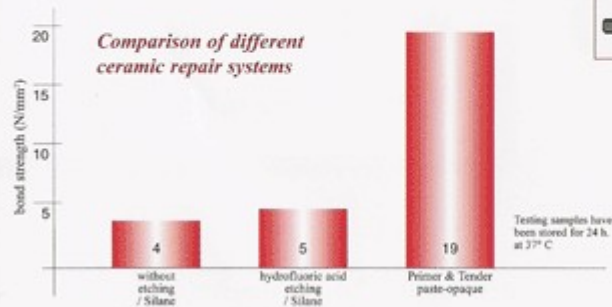
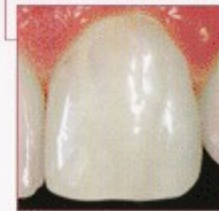
5 Enamel Composite

Enamel plus HFO
opalescent, intensive and
generic enamels



6 Polishing

Enamel plus SHINY
diamond pastes
with brush
aluminium oxide
with felt



TENDER REPAIR KIT FOR CERAMIC - REF.COSRIP2

- 1 x 2,5 ml. Tender Bond metal-ceramic primer
- 1 x 3 g. Tender paste opaque clear for ceramic adhesion/coverage
- 1 Enamel plus "M" brush

TENDER REPAIR KIT FOR CERAMIC & METAL - REF.COSRIP1

- 1 x 2,5 ml. Tender Bond metal-ceramic primer
- 1 x 3 g. Tender paste opaque clear for ceramic adhesion/coverage
- 1 x 3 g. Tender paste opaque O2 for metal adhesion/coverage
- 1 Enamel plus "M" brush

UNIQUE FEATURES

- *best colour matching*
- *usable with led technology*
- *no microleakage or colour change in composite-ceramic borderline*

INSTRUCTIONS FOR USE

We suggest the use of a rubber dam. Roughen ceramic or metal surface with a bur. Alternatively, sandblast the surface with an intraoral sandblaster.

After cleaning, blow with oil-free air to avoid water remaining on the surface. Surface should be completely dry (important for a high bond strength).

Immediately after cleaning and drying, apply a thin layer of Tender Bond Metal primer on the ceramic or metallic surface with a brush. Airdry for about 1-2 min. However, the layer should not be too wet or leak! If necessary, use compressed air (only low pressure).

Afterwards, apply Tender Paste Opaque Clear to ceramic in a thin layer and cure for 40 sec. with a halogen or LED-curing system. This layer is necessary to ensure an optimal bonding.

Cover exposed metal with Tender Paste Opaque O2 in a very thin layer and cure for 40 sec. with a halogen or LED-curing system.

Apply composite in the layering technique and polymerise.
Finish and polish.

NOTE: the surfaces of the framework should be cleaned of any grease and polish residue. The opaque should only be applied in very thin layers. If the opaque layers are applied too thickly, it prevents optimum polymerisation and weakens the bond

Working time: 1 minute (over 1 min. the bond strength would be reduced)

Storage: <25°C. Close the syringe after use and protect from direct light.
Not use after expiry date.

Side effects: extremely rare

Contraindications/interactions: do not use in case of hypersensitivity of the patient to one of the components. Inform the dentist of the above information for a possible interaction with medicine and other materials present in the mouth.

Manufacturer: GDF mbH, Rosbach - Germany
Designer & Distributor: MICERIUM S.p.A. Via Marconi, 83 - 16030 Avegno (GE) Italy
Tel. (+39) 0185 7887 880 Fax (+39) 0185 7887 970 - www.micerium.it - hfo@micerium.it

